

## Talk The Talk - Impact Report

School: **Abbey Green Academy**  
Cohort: **Year 12**  
Lead Teacher: **T. Cher**  
Workshop Date: **16/06/2022**  
Workshop Name: **Talk About The Future**

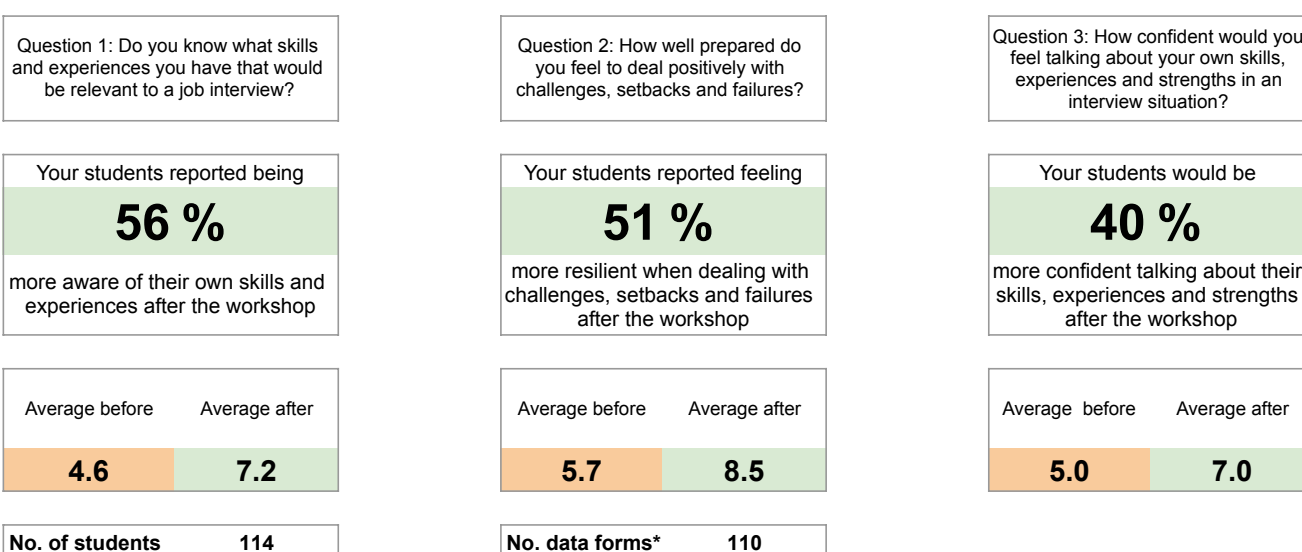
Your Schools  
Liaison Director: **Mark Farmer**

**Talk The Talk**  
CONFIDENT COMMUNICATION FOR LIFE



### Key Impact Measures

Our trainers ask your students 3 standardised questions at key points in the workshop. Student responses, on a scale of 1-10, are recorded and used to generate a 'before' and 'after' score and then a percentage change. The following is an average of all groups data to provide an overall impact for the intervention. Individual class and pupil data can be found further below.



### Next Steps

- > **Celebrate** all students' participation and progress in assembly with particular congratulations to Sir Jack's Talk About The Future Champions as nominated by your trainers
- > **Reflect** on the learning with students post workshop – repeat the mock interview format used in the workshop but with a student leading the interview. Discuss any revised aspirations.
- > **Follow-up** with our free Talk The Talk Oracy resources to embed the oracy and confidence growth resulting from the workshops. You can find them here: <https://talkthetalkuk.org/resources/> or consider our **other workshops** - see below

#### Full day and half day oracy workshops - Options for Year 7 through to Year 13 and Transition

<https://talkthetalkuk.org/workshops/>

Packed full of engaging activities to develop students' confidence, whilst developing core oracy skills and strategies. Students will explore and apply persuasive language techniques to get their message across and will be well prepared for English Speaking and Listening assessments or transitioning into their new secondary school

#### Teacher CPD - Ideal for teachers and school staff

<https://talkthetalkuk.org/workshops/talk-the-talk-teacher/>

Support cross-curricular oracy impact within your school or MAT. Our Teacher CPD explores the success criteria for 'good' oracy, how to effectively model positive communication including visual, vocal and verbal modes, strategies for engaging students with oracy and approaches for embedding oracy within the curriculum. We can deliver our CPD in a number of formats.

We look forward to working with you again!

If you wish to discuss follow up workshops, please contact your Schools Liaison Director at:

## Class Data

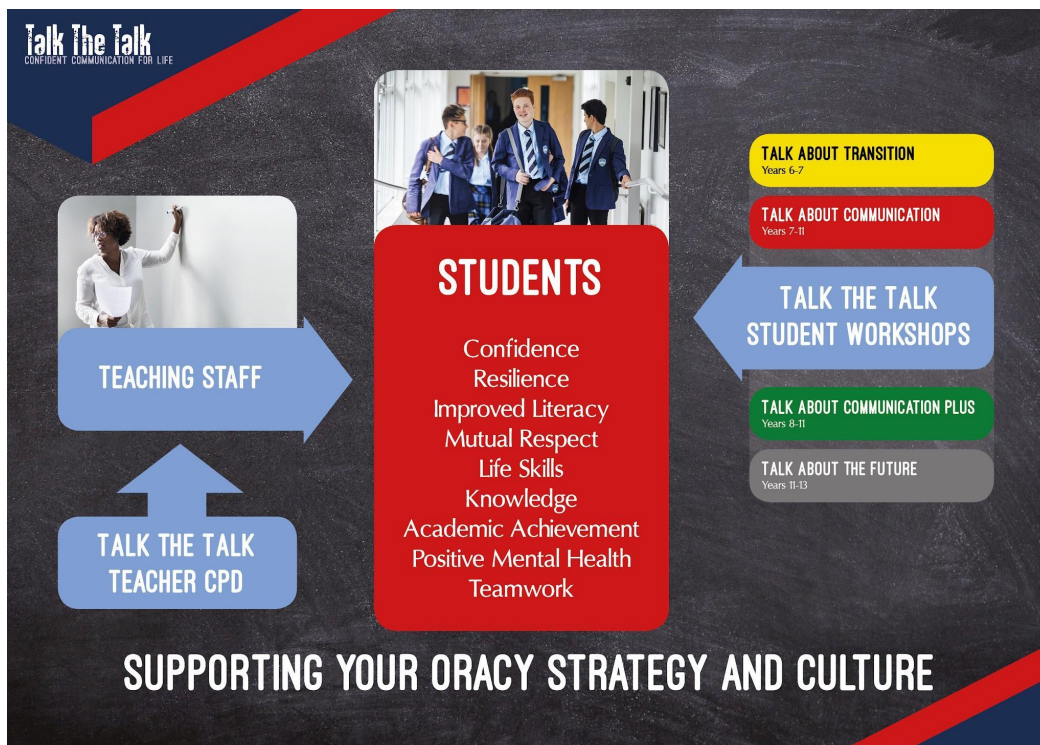
This table shows the key impact measures for each group our trainers worked with.

Class	Trainer	No. Students	No. Data forms*	Average percentage increase in key measures		
				Skills Awareness	Resilience	Interview Confidence
12A	John Walker	30	30	66	56	45
12B	Laura Smith	29	27	62	52	33
12C	Andrew McCoy	26	25	45	51	35
12D	Katherine Price	29	28	52	44	50
			0	0	0	0
			0	0	0	0
			0	0	0	0
			0	0	0	0
			0	0	0	0
			0	0	0	0
			0	0	0	0
			0	0	0	0
Averages		29	28	56	51	40
Totals		114	110			
		% Students making positive progress		87	96	85
		% Students making 'Breakthrough' (4+) progress		27	33	15

\* We can only process data for fully completed and returned data forms from students. Not all students attending the workshops will return data forms for a number of reasons. As a result, the number of data forms returned can be slightly less than the number of students attending the workshops (see above table for exact numbers). All impact measure results are based on all fully completed and returned data forms.

## How can Talk The Talk support your oracy strategy further?

We offer a range of student workshops and teacher CPD to provide a complete oracy solution for your school.



Download your free lesson plans and resources to help you embed oracy into your teaching.

Just visit [www.talkthetalkuk.org/resources](http://www.talkthetalkuk.org/resources) to download your free resources!

## Student Data - Groups 1-2

Class	12A
Trainer	John Walker

Class	12B
Trainer	Laura Smith

Initials	Skills Awareness	Resilience	Interview Confidence	Initials	Skills Awareness	Resilience	Interview Confidence
IL	4	4	2	AH	3	4	1
EM	2	3	5	LN	3	4	2
HW	4	1	4	GFJ	4	4	4
JM	3	8	1	SG	3	6	0
SA	4	7	5	AT	1	1	2
JK	2	2	3	MP	1	2	1
LV	0	3	1	KS	3	0	3
EA	4	5	2	HRS	5	4	0
MG	2	4	3	HK	2	3	2
RD	2	4	2	LH	1	2	2
AW	2	4	0	GB	1	1	1
SW	3	2	1	RB	3	2	1
MG	4	2	2	JE	6	5	0
SS	5	6	1	NW	5	5	3
TC	3	2	7	TM	1	2	1
AK	4	3	1	SW	2	2	2
KT	1	1	3	KI	5	0	0
AS	1	2	0	RMC	4	1	5
CG	0	2	1	DO	0	0	2
NL	4	3	2	DA	1	3	1
KH	3	3	3	CE	2	3	2
LC	3	3	2	RS	2	2	2
KE	4	4	2	EH	5	6	3
DS	3	4	2	BR	3	2	1
DM	4	4	2	EJ	3	2	0
AB	2	2	5	WN	5	5	3
EM	0	3	0	MT	1	2	1
CB	0	1	1		0	0	0
LS	4	3	1		0	0	0
RO	0	3	2		0	0	0
	0	0	0		0	0	0
	0	0	0		0	0	0
	0	0	0		0	0	0
	0	0	0		0	0	0
	0	0	0		0	0	0
	0	0	0		0	0	0

### What is this data showing?

- > The values above allow you to look at each individual students progress by the end of the workshop across our 3 key impact measures
- > The values are the difference between a students start and end ratings, out of 10
- > For example, a student rating themselves 2 in 'Resilience' at the start of the workshop and 6 by the end would return a positive value of 4

Key:

	Breakthrough - This student made at least 4 points of progress
	Positive - This student made 1-3 points of progress
	No change
	A negative value

## Student Data - Groups 3-4

Class	12C
Trainer	Andrew McCoy

Class	12D
Trainer	Katherine Price

Initials	Skills Awareness	Resilience	Interview Confidence	Initials	Skills Awareness	Resilience	Interview Confidence
LW	6	4	3	EP	1	3	1
AN	2	4	1	SP	2	3	7
RB	2	4	-1	BJ	6	5	4
AA	2	2	4	KM	0	1	1
AJ	2	2	2	AE	0	1	0
EF	3	3	2	AS	1	1	3
GP	5	5	3	LE	1	2	3
SM	2	3	2	JC	0	1	-1
LA	1	3	2	ET	1	6	9
PR	4	5	2	CG	2	2	2
NC	3	1	2	RM	3	0	4
SS	3	4	3	TL	2	4	2
ML	2	3	1	ET	4	4	4
GN	2	4	2	OC	3	4	3
SC	3	2	4	EG	0	1	0
HX	2	1	0	EM	2	3	2
CW	0	2	0	RV	2	3	1
HC	0	1	1	AK	5	3	2
MP	0	2	1	LB	5	4	2
IEL	2	4	3	HW	6	4	4
EK	2	2	1	LN	6	2	2
CN	3	2	2	ZS	2	2	4
SQ	3	4	3	MB	3	3	1
LM	2	3	1	AJ	1	1	1
NG	2	2	2	GE	0	1	0
	0	0	0	ME	6	3	0
	0	0	0	VG	2	3	1
	0	0	0	KA	5	3	2
	0	0	0		0	0	0
	0	0	0		0	0	0
	0	0	0		0	0	0
	0	0	0		0	0	0
	0	0	0		0	0	0
	0	0	0		0	0	0
	0	0	0		0	0	0
	0	0	0		0	0	0
	0	0	0		0	0	0
	0	0	0		0	0	0
	0	0	0		0	0	0
	0	0	0		0	0	0

### What is this data showing?

- > The values above allow you to look at each individual students progress by the end of the workshop across our 3 key impact measures
- > The values are the difference between a students start and end ratings, out of 10
- > For example, a student rating themselves 2 in 'Resilience' at the start of the workshop and 6 by the end would return a positive value of 4

Key:

	Breakthrough - This student made at least 4 points of progress
	Positive - This student made 1-3 points of progress
	No change
	A negative value